

EPISTAR

CL2835 CC Flexible strip - Epistar SMD 2835

Taiwan Epistar SMD 2835 LEDs, 170 Lm / Watt, constant current control. With heat resistant 3M double sided tape on the backside. IP20, cuttable every 100 mm. Beam angle 120°.

Also deliverable in IP67 and IP68.

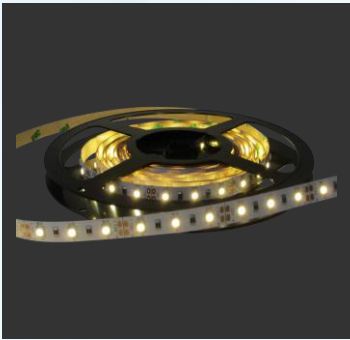
Technical data

LED Module producer	Epistar	Dimmable	dimmable
Technology	SMD 2835	Appliance class	II
Heatsink	Passive cooling	IP class	IP20
CRI	>80	Voltage	22 - 27 VDC
Surge current limit	no	Power factor (PF)	
Type		System efficiency	170 Lm/W (A++)

Watt	A (mm)	B (mm)	Kg
90	10.000	10	0,3
120	10.000	10	0,3
180	10.000	12	0,3
210	10.000	12	0,3

Beam angle	120°
Colour temperature	827 - 830 - 840 - 860
Product colour	White lacquered (Wh)

DATASHEET



EPISTAR

Life time and warranty

Warranty:	2 years
Availability of spare parts:	>10 years after last delivery
Availability for re-order :	>2 years after last delivery
Life time:	>35.000 hours (70 % light transmission)

CE Conformity

The above mentioned lights are in accordance with EU-Directives 2006/95/EC (low voltage directive), 2004/108/EC (EMC-Directive), 2009/125/EC (Ecodesign requirements) and 2011/65/EU (RoHS-directive). The standards EN55015, EN 60598, EN 61000, EN 61347 and EN 61547 have been applied.

A declaration of CE Conformity will be supplied together with the product.

Brand Inside®

With our **Brand Inside®** guarantee we guarantee as one of the few suppliers, that only brand products are inside. „What is on the packaging will be also inside!“. You will not find cloned products, "No-Name" products, B-quality, etc. from us.

Disposal

This product is in conformity with directive 2002/96/EU. Do not dispose this product with other household waste. Instead, it should be disposed at a designated collection point for the recycling of waste electrical and electronic equipment.

Limitation of liability

Subject to modifications. Please ensure you are using the latest version of this datasheet.

DATASHEET